

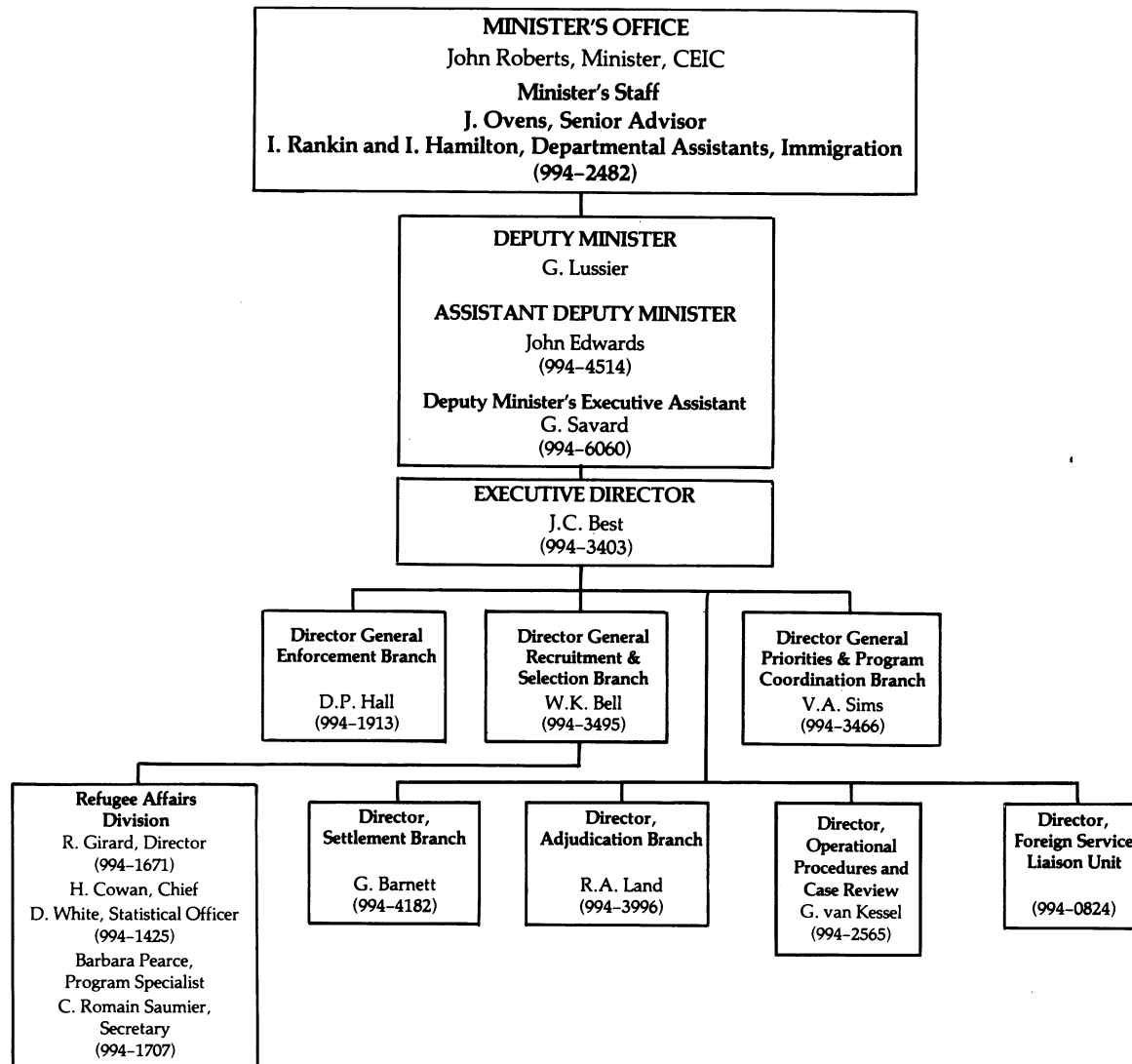
REFUGEE POLICY

WHO'S WHO

IN

CANADA'S EMPLOYMENT AND IMMIGRATION COMMISSION

(C.E.I.C. — OTTAWA)



RECRUITMENT AND SELECTION branch is responsible for the establishment and monitoring of immigration levels and the policies and programs related to the selection of the three classes of immigrants: family class, refugees and workers. Responsible for consultations with provinces concerning immigration agreements and working arrangements, and for consultations with refugee and other non-governmental organizations.

REFUGEE AFFAIRS DIVISION takes specific responsibility for refugee policy within Recruitment and Selection.

ENFORCEMENT branch has functional responsibility for the application and enforcement of Immigration law within Canada and at ports of entry.

OPERATIONAL PROCEDURES AND CASE REVIEW monitors the interpretation of the Immigration Act and Regulations by Canadian and overseas offices concerning all immigration admission matters. Inquiries on specific refugee cases are handled by this branch, rather than by the Refugee Affairs Division.

SETTLEMENT branch has functional responsibility for program and service activities delivered to immigrants and refugees at posts abroad, on arrival at ports of entry and at final destination in Canada.

ADJUDICATION branch directs the mechanism for adjudication of immigration inquiries at ports of entry and inland and renders decisions respecting permission of visitors to enter or remain in Canada and decisions respecting exclusions, deportations and departure notices.

PRIORITIES AND PROGRAM COORDINATION branch is responsible for program management, operational support and resource planning as well as secretariat services.

THE FOREIGN SERVICE LIAISON UNIT was established to provide a single responsibility centre within the Immigration and Demographic Policy Group to finalize any outstanding issues relating to the Foreign Service consolidation Exercise and to identify and develop supportive arrangement for the effective delivery of the Immigration Program overseas.